



His-tag Polyclonal Antibody

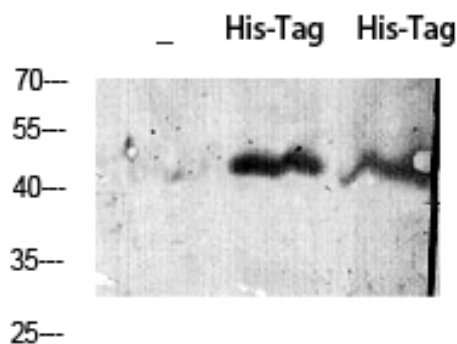
Catalog No	YP-Ab-04399
Isotype	IgG
Reactivity	Species independent
Applications	WB;ELISA
Gene Name	His-Tag
Protein Name	His Tag
Immunogen	6X His synthetic peptide conjugated to KLH.
Specificity	His-tag Polyclonal Antibody detects His-tagged recombinant proteins or His-tagged proteins overexpressed in cells.
Formulation	Liquid in PBS containing 50% glycerol, 0.5% BSA and 0.05% sodium azide.
Source	Polyclonal, Rabbit,IgG
Purification	The antibody was affinity-purified from rabbit antiserum by affinity-chromatography using epitope-specific immunogen.
Dilution	Western Blot: 1/1000 - 1/3000. ELISA: 1/20000. Not yet tested in other applications.
Concentration	1 mg/ml
Purity	≥90%
Storage Stability	-20°C/1 year
Synonyms	6 His epitope tag; Hexa His tag; HHHHHH epitope tag; HHHHHH tag; His tag
Observed Band	15kD
Cell Pathway	
Tissue Specificity	
Function	
Background	The his-tag is a series of six to nine histidine residues generally fused to either the carboxy or amino terminus of a recombinant protein. The small size of the his-tag, compared with other common epitope tags, makes it less likely to obstruct the target protein's structure or function and more suitable to use under denaturing conditions. The string of histidine residues binds to several types of immobilized metal ions, including nickel, cobalt and copper. The binding to metal ions under specific buffer conditions, allows for the simple purification and detection of his-tagged proteins.
matters needing attention	Avoid repeated freezing and thawing!



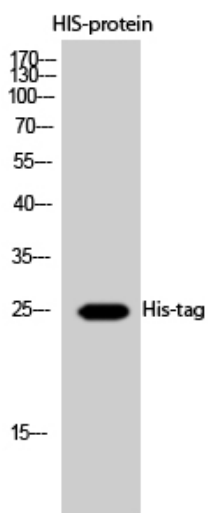
Usage suggestions

This product can be used in immunological reaction related experiments. For more information, please consult technical personnel.

Products Images



Western Blot analysis using His-tag Polyclonal Antibody against HEK293 cells transfected with vector overexpressing His tag (1) and untransfected (2). Antibody was diluted at 1:2000. Secondary antibody(catalog#:RS0002) was diluted at 1:20000



Western Blot analysis of HIS-protein cells using His-tag Polyclonal Antibody diluted at 1:2000. Secondary antibody(catalog#:RS0002) was diluted at 1:20000